

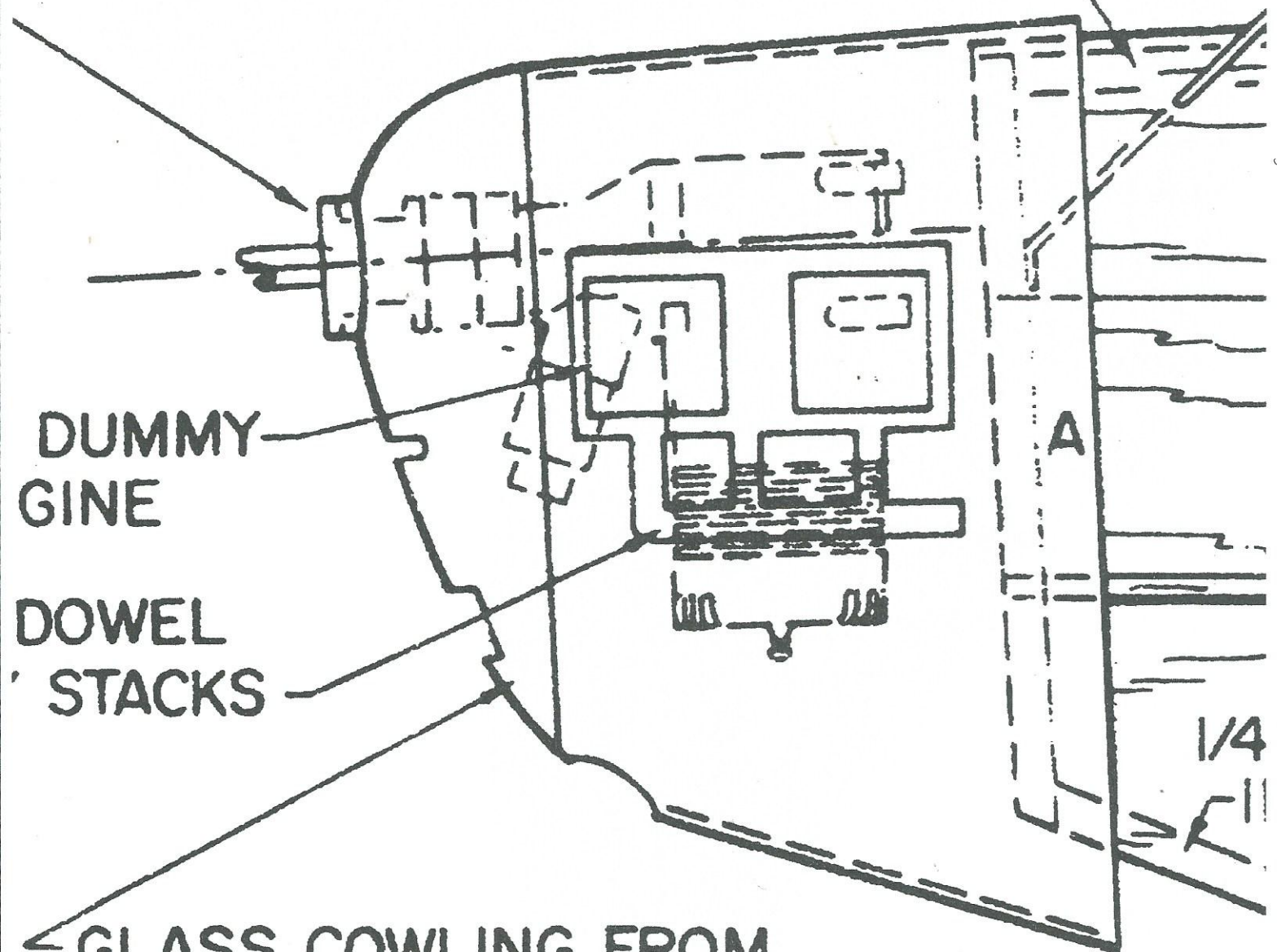
TO WIRE

P & SILVER SOLDER

R 3/4" EXTENSION
SUIT ENGINE USED.

1/16" DIA. MUS
WIRE STRUT
WRAP & SOLI

3/32" SHEET



GLASS COWLING FROM
FIBERGLASS MASTER

STRUT
#4 SHE
SCREW

SIG RP-BM-203 PRE-BENT CUB GE