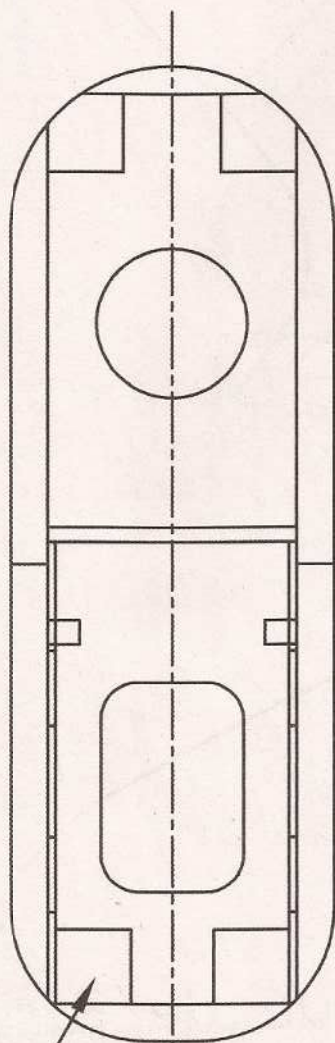
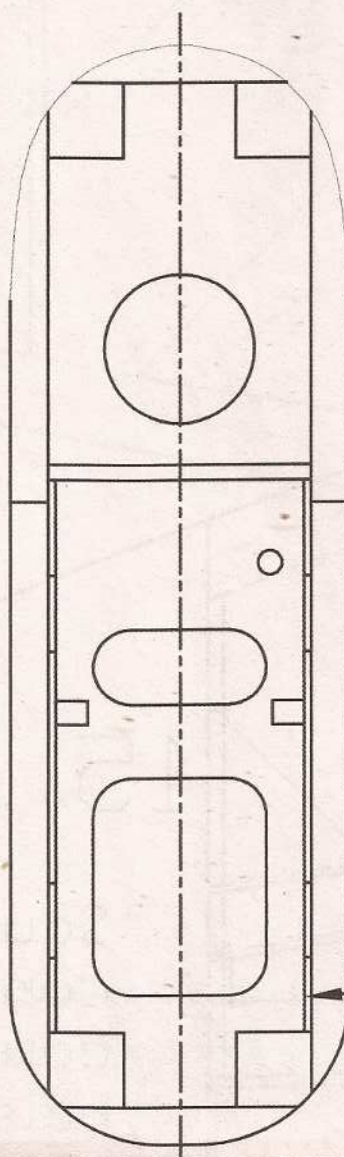


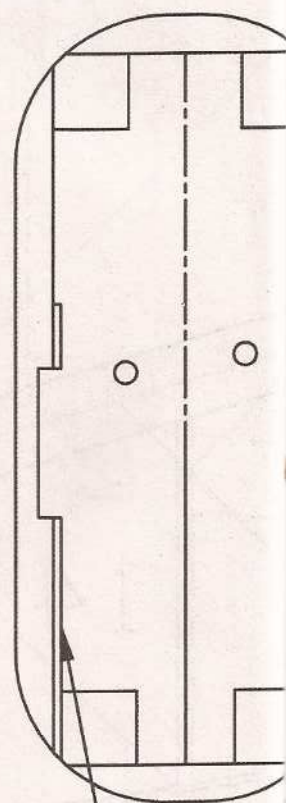
C1



C2



C3

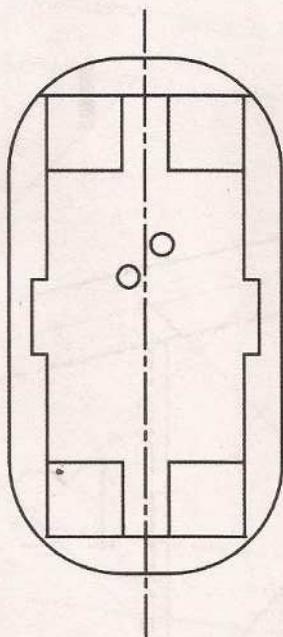


Doub

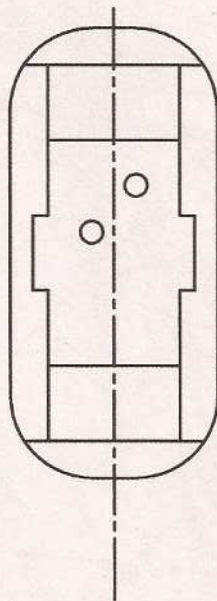


FOND DU FUSELAGE Balsa 60/10

C4



C5



Fourrer
5mm int



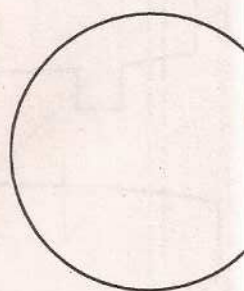
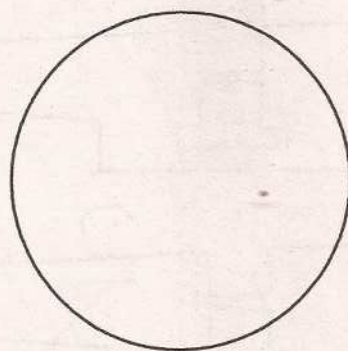
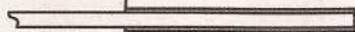
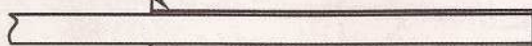
Equerre de renvoi
en plaque époxy
1.6mm

BALSA 50/10

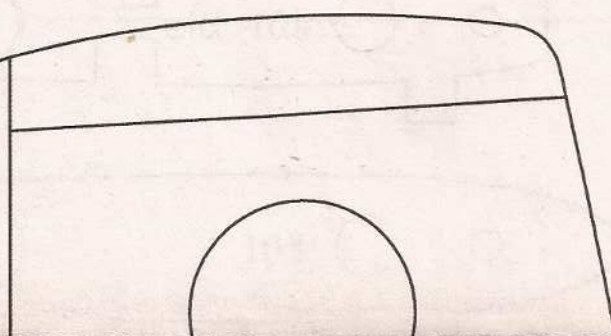
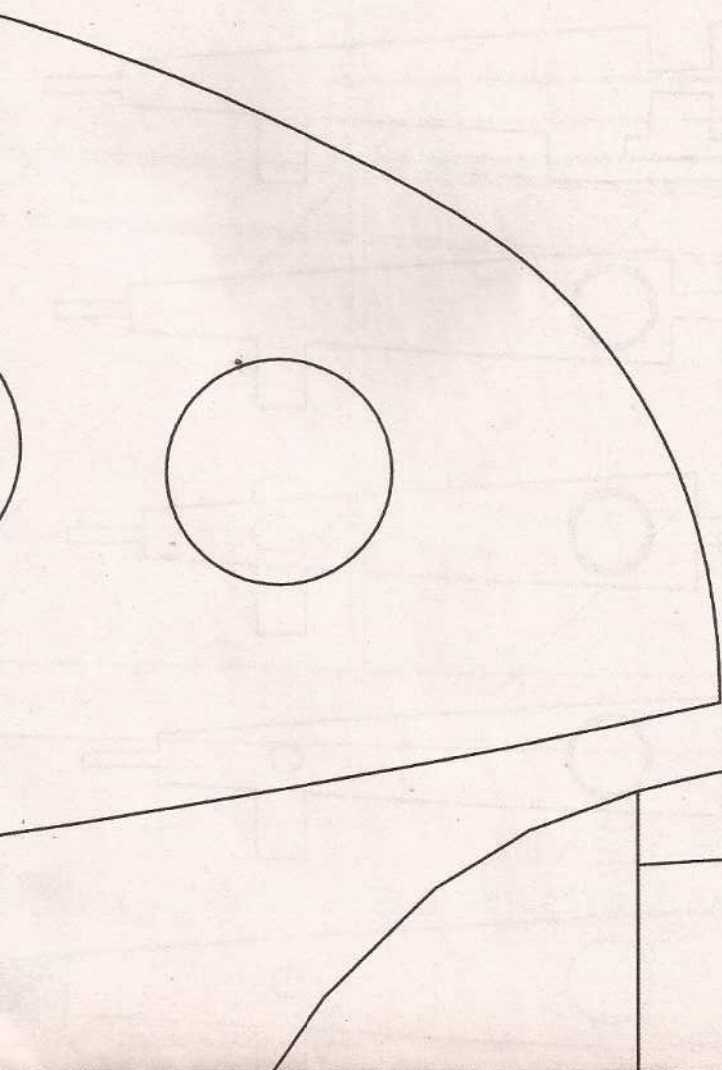
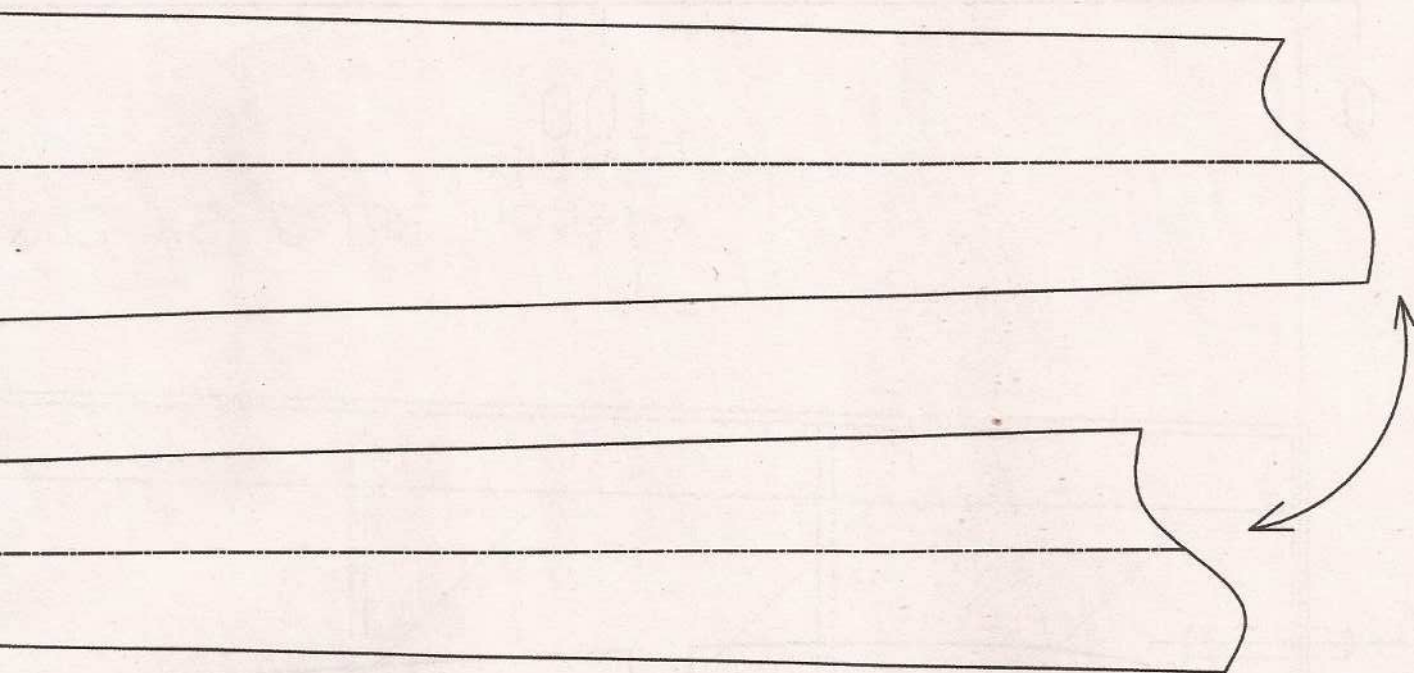
age flancs CTP 10/10

C2

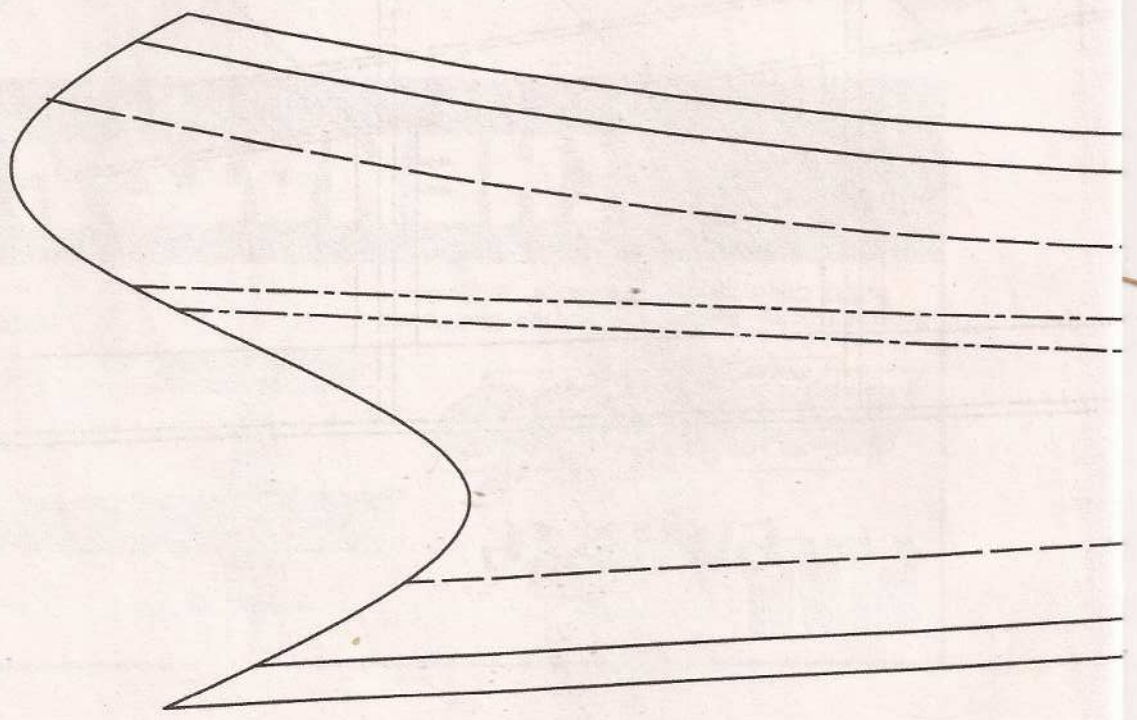
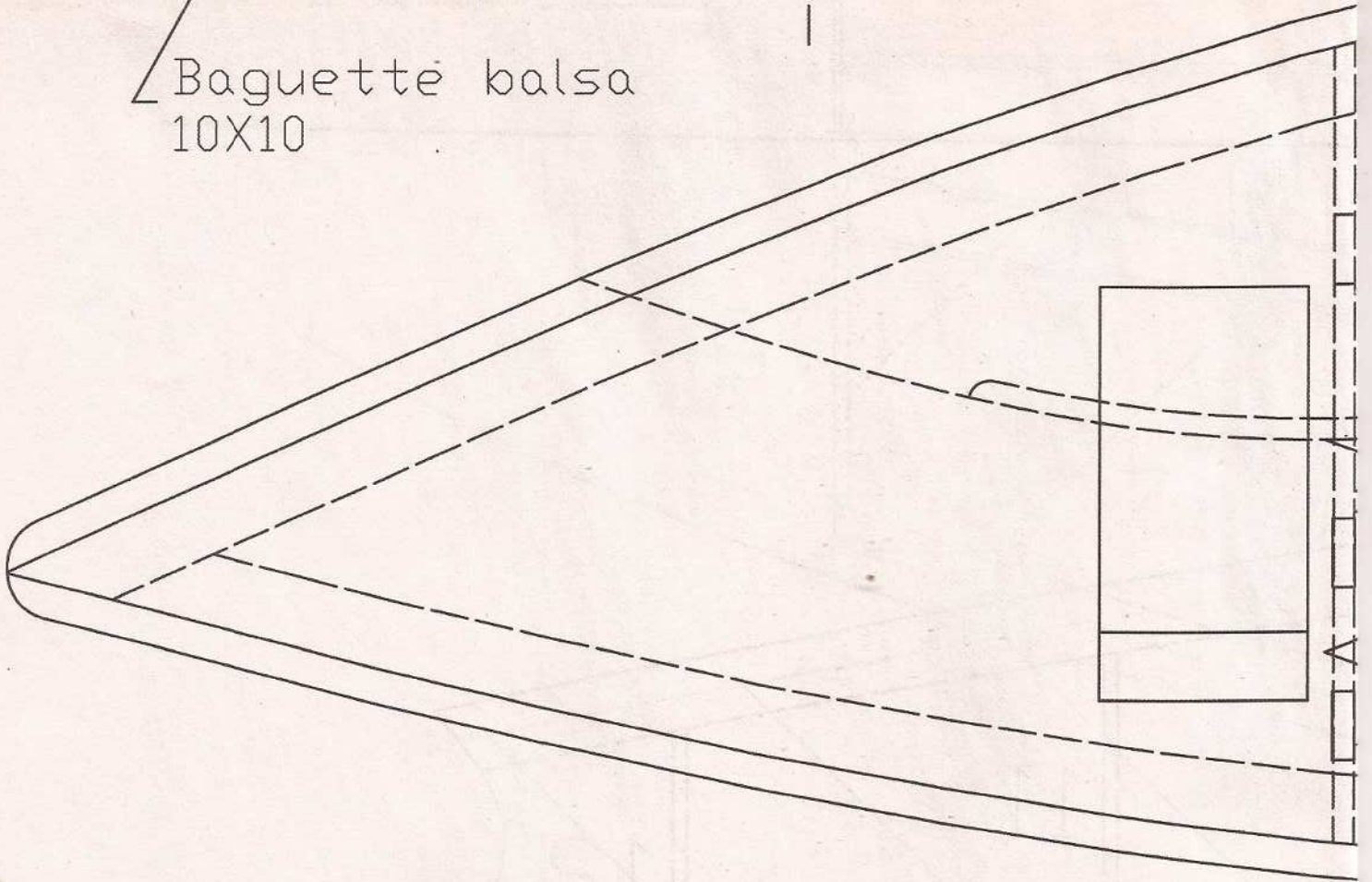
u alu diam.
rieur.

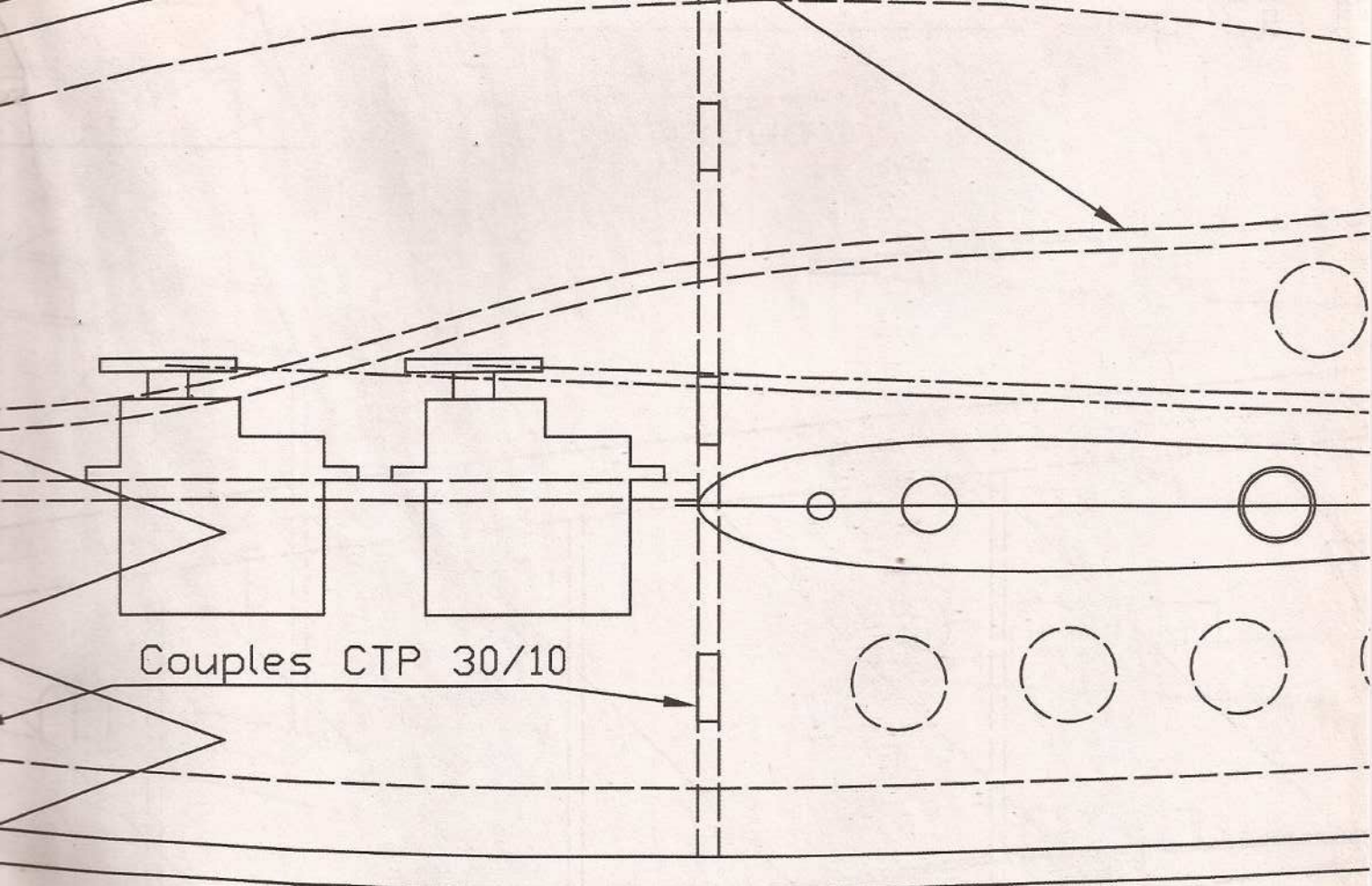


BALSA 60/10



Baguette balsa
10X10

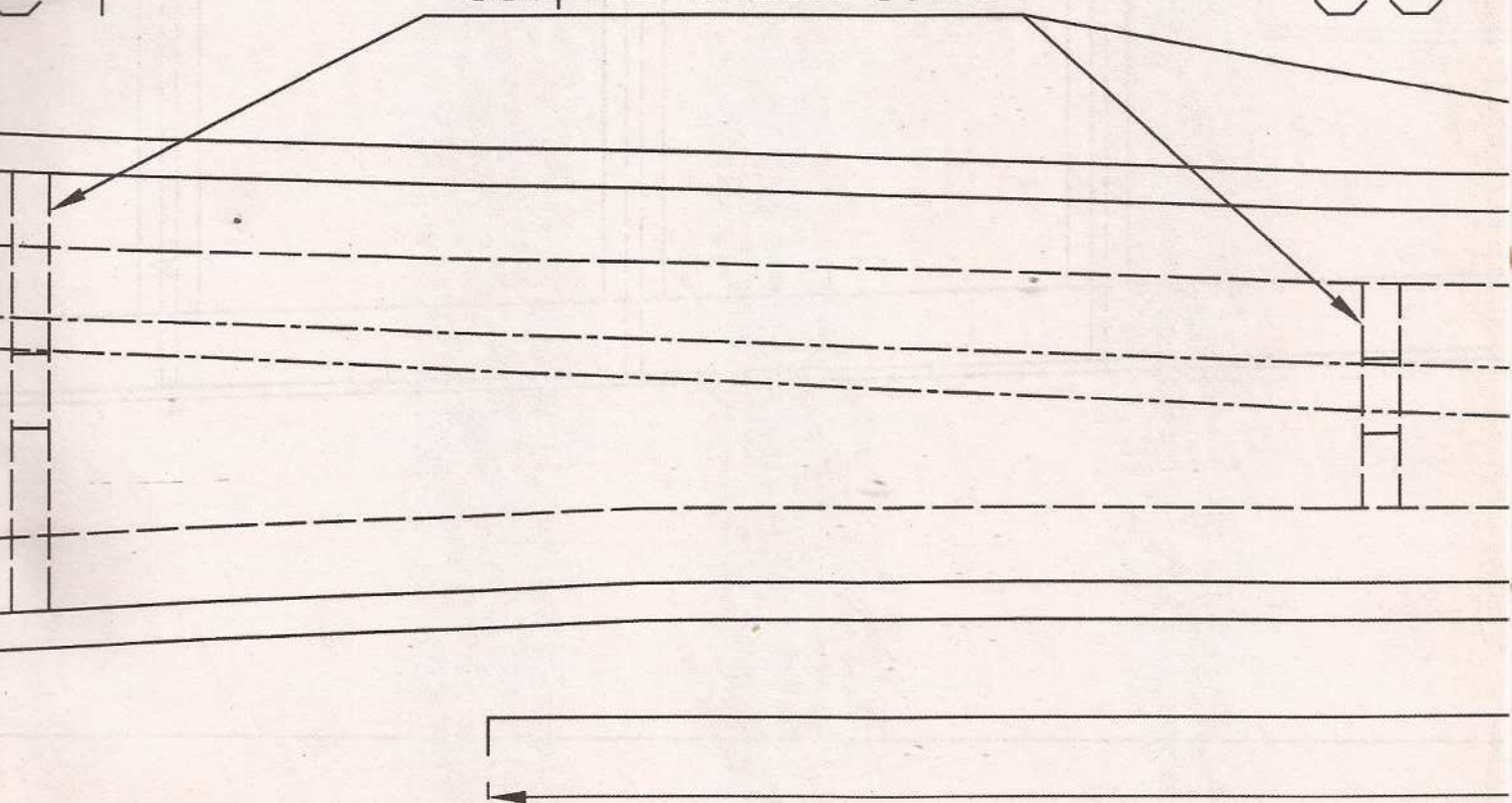




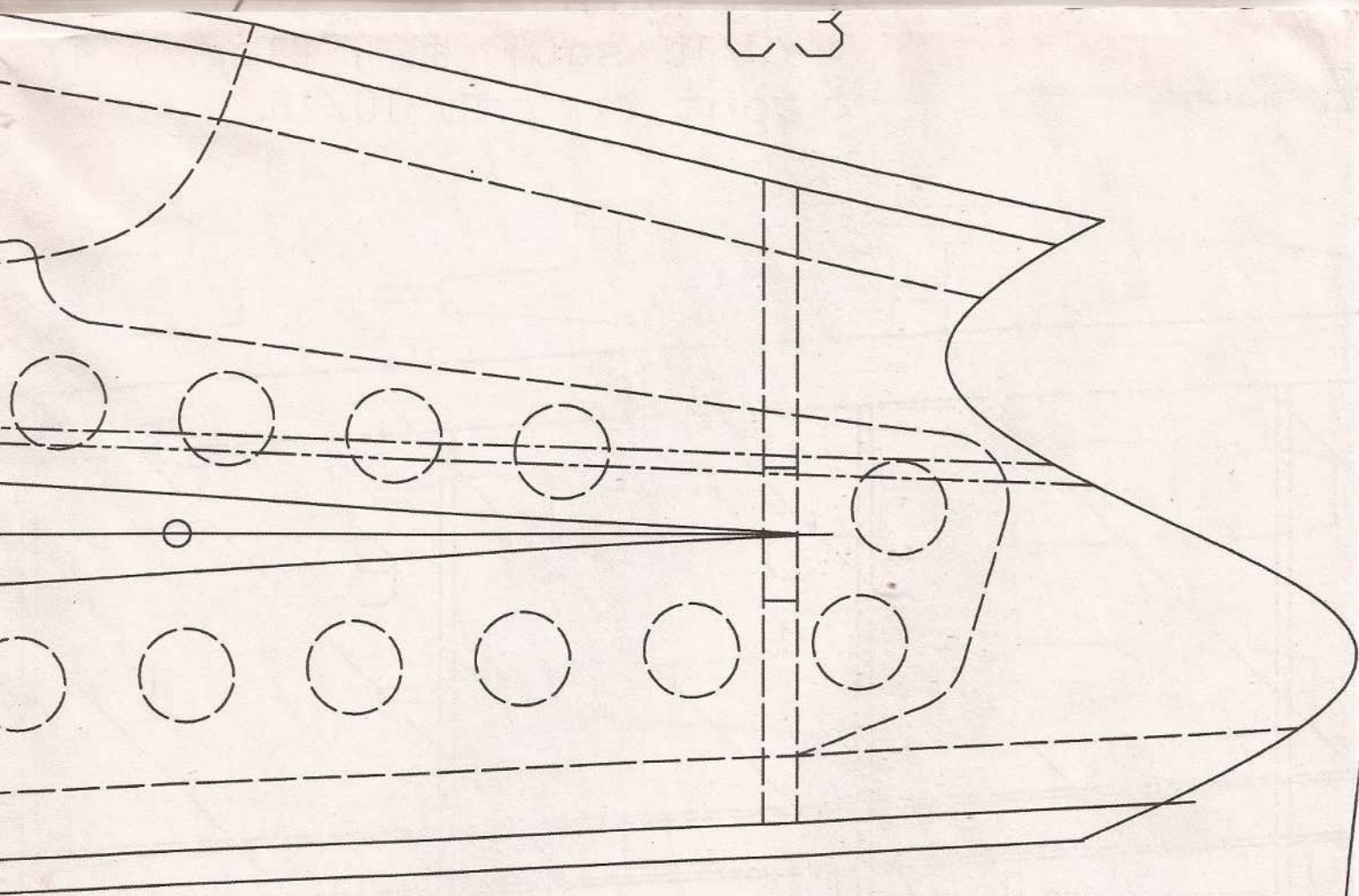
C4

Couples BALSA 50/10

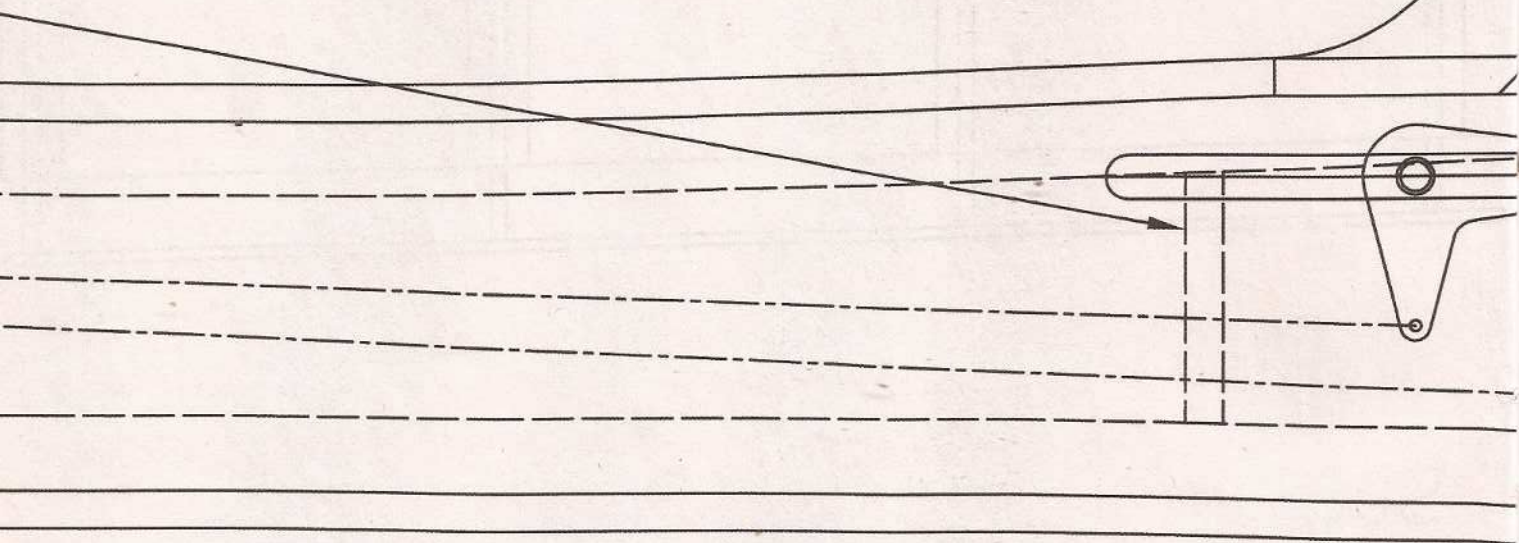
C5



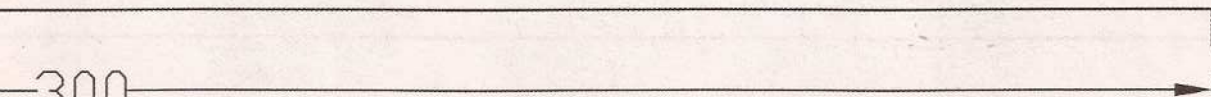
L3

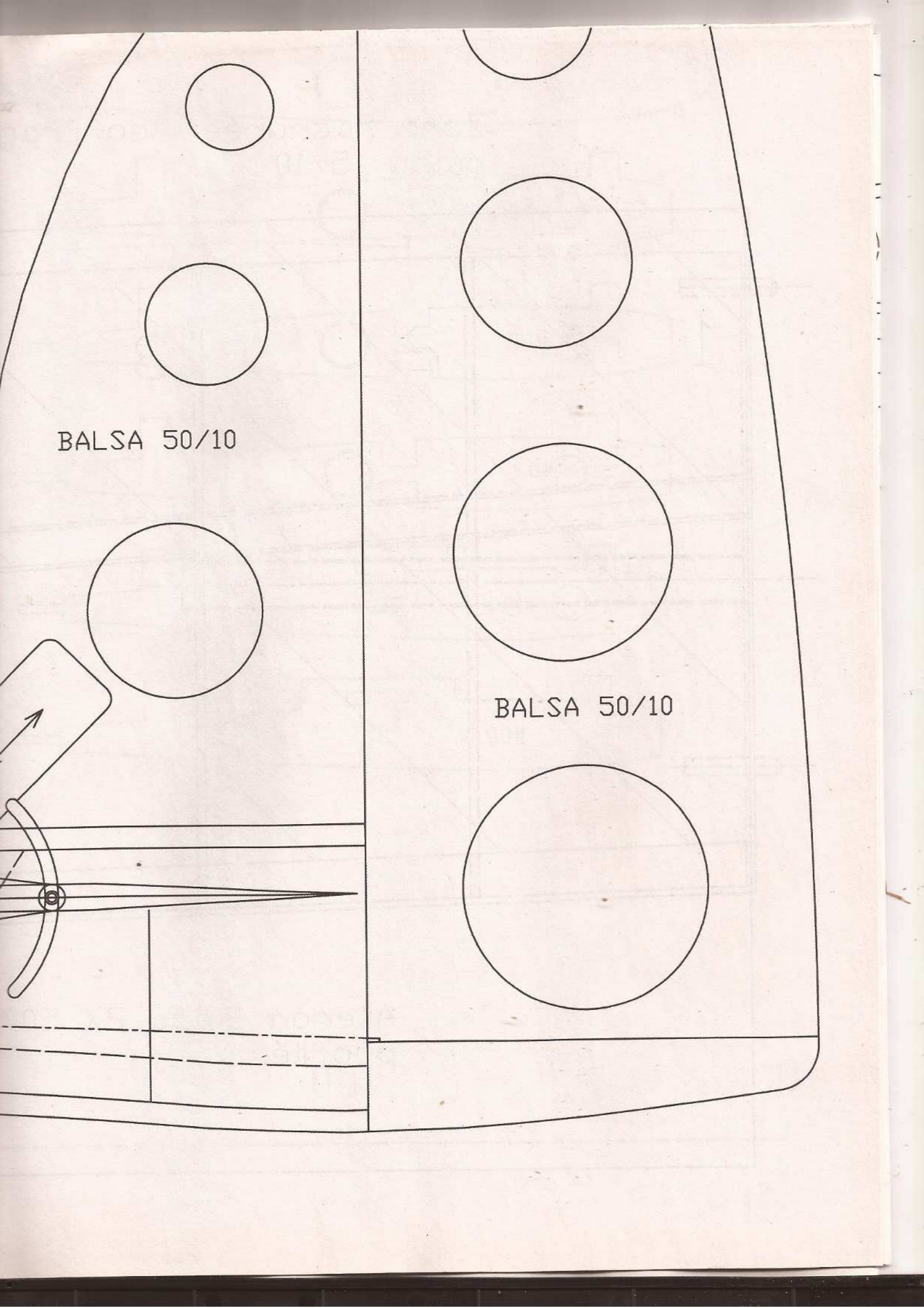


C6



300





A technical drawing of a boat hull, likely a motorboat, shown in profile. The hull is divided into two main sections by a vertical line. The left section contains three circular cutouts of increasing size from top to bottom. The right section contains three larger circular cutouts of increasing size from top to bottom. At the bottom left, there is a detailed drawing of a rudder assembly, including a rudder blade, a rudder post, and a rudder head. An arrow points to the right, indicating the direction of travel. The text 'BALSA 50/10' is printed on the left side of the hull, and 'BALSA 50/10' is printed on the right side of the hull.

BALSA 50/10

BALSA 50/10